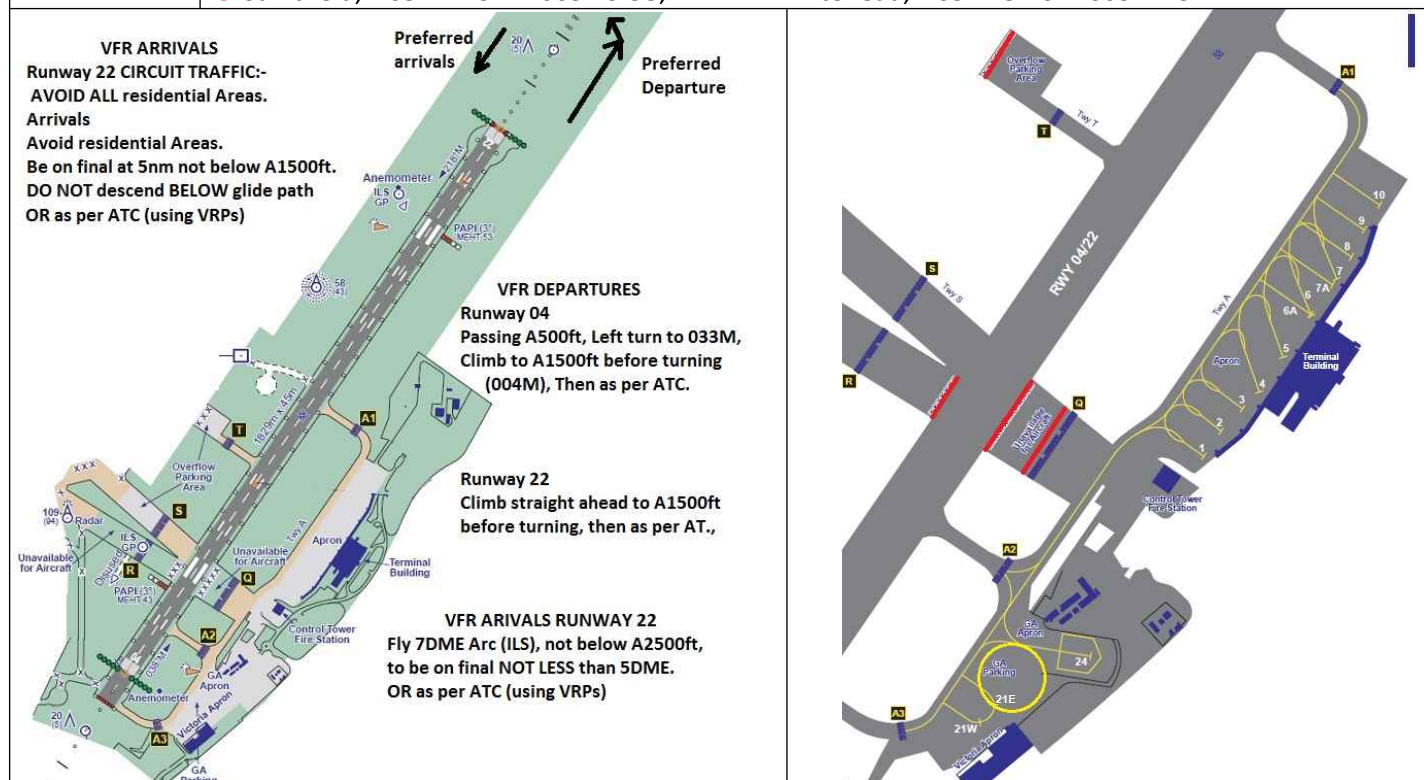


AIRFIELD NAME AND ICAO		May 25		BELFAST CITY		EGAC		Ireland	
CALLSIGN (A/C RADIO)		Belfast Tower						122.830	
CALLSIGN (ES/VATSIM)		EGAC_TWR						APP. 130.850	
LOCATION		Lat N054.37.05.000			Long W005.52.21.000			Elev. 15ft	
LOCATION GEOGRAPHIC		East side of BELFAST DOCKS						VFR Conspicuity	
CHART SOURCE/VOR		NATS	Listening Frequency. 130.850; Squawk 4255				Belfast Radar 130.850		
METAR AIRPORT		EGAC 124.580		EGAC_APP radar 134.800				QFE= QNH	
NAV AIDS (FSX / PLANG3)		NDB; HB 420.0kHz			ILS: I-BFH 108.10mHz			DME/	
RUNWAYS	Headings	Dimension		Surface		Noise Abatement and Notes			
	04 / 22	1829m x 45m		Asphalt		Grooved;			
AIRSPACE	CLASS D CTR	Transition level 6000ft			Airspace above is:- Class E Belfast TMA1/2. A2000ft +				
CIRCUITS HEIGHT / DIR.		A1500ft		VFR circuits to the WEST (over the water)04 LH. 22 RH or as instructed					
NO FLY AREA		ALL A/C observe rules for establishing the centre-line and heights on approach and departure.							
LOCAL HAZARDS		There are numerous OBSTACLES around and on the approach of both runways. Establish the centre-line as advised (see below) and DO NOT go below (3°) Glide Path on final approach. Being located in a Lough, with a BIRD SANCUARY close to 22 approach, BIRDS ARE A CONSTANT HAZARD , especially Greylag Geese, up to 100ft under 04 approach. CAUTION restricted / unavailable taxiways and aprons (see Chart).							
HELICOPTER OPERATIONS		Helicopter operations (except emergency services) not permitted (RW). VATSIM/IVAO; At the discretion of the Tower Controller. Pilots to comply with ALL instructions, particularly ground movement.							
SPECIAL RULES		LVP is RVR 800M or less or Cloud Base 200ft or less. i.e. no VFR departures. ARRIVING VFR Runway 22. Establish 7DME Arc. NOT Below 2500ft to establish C/L not less than 5DME. Runway 04. Establish C/L by 5 DME, NOT below 1500ft DEPARTING VFR Runway 22. Climb straight ahead t0 1500ft before turning, then as instructed by ATC. Runway 04. Passing 500ft QNH, LEFT turn, track 0330M, climb to altitude 1500ft QNH before turning, then as instructed by ATC.							
REMARKS		Preferred RUNWAY OPS: ARR: 22; DEP 04. Various parts of the aerodrome are private, other areas are unsuitable for A/C. It is recommended that the A/D chart is used for reference.							
VRPs		A Comber, N054.33.03 W005.44.45; B Groomsport, N054.40.30 W005.37.05 C Saintfield, N054.27.37 W005.49.58; D Whitehead, N054.45.10 W005.42.34							



ALL PILOTS: PLEASE PUT YOUR CALLSIGN IN TS3 NOT TO BE USED FOR REAL WORLD OPERATIONS